

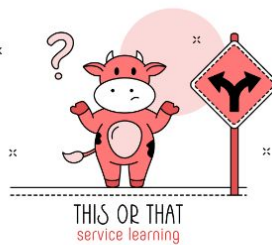


MARYLAND

2024-2025

OLD BAY REGIONAL

TOURNAMENT



Saturday, February 8th, 2025

Salisbury Middle School 607 Morris Street Salisbury, Maryland

Tournament Information

Welcome! Good luck to all teams competing in the tournament!

Thank you to all of our Team Managers, teachers, school sponsors, Appraisers, volunteers, and parents for your hard work to make this tournament possible!

In the Old Bay Region, the first place team in each Challenge at each Level will advance to the Maryland State Tournament on March 15th, 2025 to be held on the UMBC campus.

Tournament Notes & Reminders

- Teams should report to their Challenge Prep Area 20 minutes before their scheduled Presentation time.
- Spectators will NOT be allowed to enter the Presentation Area once a team's Presentation has begun.
- Teams are encouraged to trade pins as a way to meet new friends and show good sportsmanship.
- Make sure any trash & wrappers are disposed of properly. Please clean up after yourselves and your team.
- Parents, spectators, and Team Managers: remember to respect the rules of Interference. Do not interfere with the team's solution.

Special Acknowledgments

Ronna Bievenour- Regional Director, Old Bay Region Maryland Destination Imagination
Sharon Rieck- Regional Director, Old Bay Region Maryland Destination Imagination

Ken Johnson- Regional Challenge Master - Technical
Sunny Choudhary- Affiliate & Regional Challenge Master - Scientific
Laura LeBlanc- Regional Challenge Master - Fine Arts
Charles Doherty- Affiliate Challenge Master- Improvisational
Antoinette Purnell- Regional Challenge Master- Improvisational
Alex McRae- Regional Challenge Master- Engineering
Cassidy Feeney- Regional Challenge Master- Service Learning
Courtney Feeney- Regional Challenge Master- Instant Challenge
Richard Harder- Affiliate Challenge Master- Instant Challenge

Sean Decker- Affiliate Director

Wicomico County Public Schools & Staff for the use of Salisbury Middle School

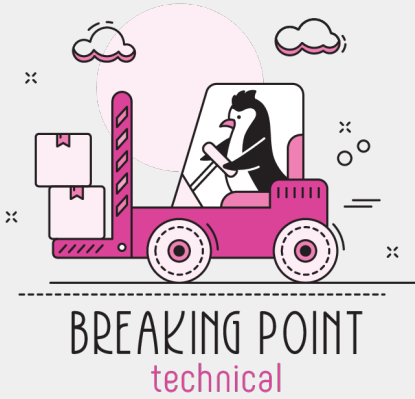
Thank you to the multiple Regional Directors, RCM's and appraisers from other DI regions across the State and volunteers who journeyed over the Bay Bridge to help us make this tournament a success. Your support means a great deal to us!

Release/Disclaimer

By my participation in an event conducted by an Affiliate, Region, or other gathering related to the Destination Imagination program, the participant or participant's parents or participant's guardian understands and hereby voluntarily agrees to release, waive, forever discharge, hold harmless, defend, and indemnify Destination Imagination, Inc. and its agents, officers, boards, volunteers, and employees from any and all liability and all claims, actions, or losses for bodily injury, property damage, wrongful death, loss of services, or otherwise which may arise out of the participant's participation in activities related to the Destination Imagination event, including travel to and from the event.

General Schedule

Time	Event	Location
7:30 am	Doors Open/ Registration	Lobby
7:30 a.m.	Souvenir Sales	Lobby
9:00 a.m.	Central Challenges Begin	Multiple Locations
8:00am- 2:00pm	Flannery's Food Truck Open	Outside Entrance to School
2:45pm	Awards Celebration	Cafeteria or Gymnasium

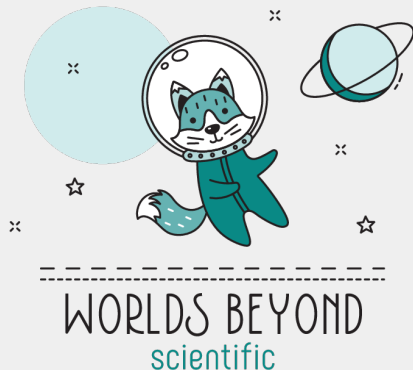


TECHNICAL CHALLENGE

GYMNASIUM

- Design and build assembly equipment and destruction equipment.
- Use the assembly equipment to create a stack of items.
- Use the destruction equipment to disassemble and/or destroy the stack.
- Create and present a story about a character who lacks something important and attempts to gain it.
- Create and present two Team Choice Elements that show off the team's interests, skills, areas of strength, and talents.

Team #	Organization Name	Team Name	Level	Team Challenge Time	Instant Challenge Time
120-06833	Henson YMCA Homeschoolers	The Space Dogs	EL	11:50 AM	1:05 PM
120-83183	Saint Michaels Elementary School	Endless DI-lemma	EL	12:10 PM	1:20 PM
120-68507	Saint Michaels High School	Genghis Khan-struction	SL	12:30 PM	9:00 AM

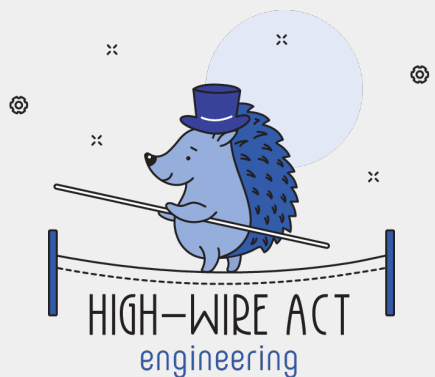


SCIENTIFIC CHALLENGE

ROOMS E118 & E115

- Create and present a story in which a character who is located on a planet other than Earth thinks they are alone but discovers that they are not.
- Include technobabble in the story.
- Design and build a device and/or effect that demonstrates what the technobabble describes.
- Include a scientific demonstration that shows the science behind why a specific phenomenon of the planet happens and/or exists.
- Create and present two Team Choice Elements that show off the team's interests, skills, areas of strength, and talents.

Team #	Organization Name	Team Name	Level	Team Challenge Time	Instant Challenge Time
120-23685	St. Michaels Elementary School	Saints	EL	9:20 AM	10:25 AM
120-06778	St Michaels Middle School	Scientific Sisters	ML	9:40 AM	11:55 AM



ENGINEERING CHALLENGE

ROOM A134

- Design and build a transporter that will be tested during the team's Presentation.
- Complete weight transport tests to test how much weight the transporter can carry along a tournament-provided cord at various angles.
- Create and present a story in the style of contemporary circus.
- Include a daring display and an ensemble spectacle in the Presentation.
- Create and present two Team Choice Elements that show off the team's interests, skills, areas of strength, and talents.

Team #	Organization Name	Team Name	Level	Team Challenge Time	Instant Challenge Time
120-98659	The Salisbury School	Something Something Dragons	ML	10:15 AM	12:40 PM
120-81413	Henson YMCA Homeschoolers	3/4 of a Boy Band	SL	10:35 AM	9:15 AM

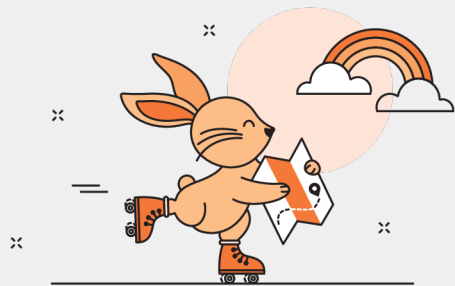


FINE ARTS CHALLENGE

ROOMS B127 & B128

- Create and present a story about how something small and/or simple can create a big impact.
- Include a focal character in the story.
- Include an emotional moment in the story.
- Design and create a minimalist set.
- Create and present two Team Choice Elements that show off the team's interests, skills, areas of strength, and talents.

Team #	Organization Name	Team Name	Level	Team Challenge Time	Instant Challenge Time
120-96786	St. Michaels Elementary School	Fierce Finalists	EL	12:30 PM	10:40 AM
120-10493	The Salisbury School	The Mighty Dragons	EL	12:50 PM	10:55 AM
120-87229	Wicomico County Public School Salisbury Middle School	The Cyber Cix	ML	1:10 PM	12:10 PM
120-42785	Wicomico County Public School Parkside High School	Brilliant Bonders	SL	1:30 PM	12:25 PM



ARE WE THERE YET? improvisational

IMPROVISATIONAL CHALLENGE ROOMS E137 & E140

- Create and present an improvisational skit about a traveling character.
- Research locations and show the character's route between a starting location and an ending location.
- Research modes of transportation and incorporate one into the skit.
- Include a seeker and a detour in the skit.

Team #	Organization Name	Team Name	Level	Team Challenge Time	Instant Challenge Time
120-62050	St Michaels Middle School	No Chick-Fil-A Sauce	ML	11:00 AM	9:45 AM
120-66085	St Michaels High School	Molly and the 2nd borns	SL	11:20 AM	9:30 AM
120-89080	Wicomico County Public Schools Pemberton Elementary School	Panda Pals	EL	11:40 AM	1:35 PM



THIS OR THAT service learning

SERVICE LEARNING CHALLENGE ROOMSS E127 & E130

- Identify, design, carry out, and evaluate a project that addresses a need in a real community.
- Create and present a story about a character who must make a critical choice.
- Include at least two potential outcomes and a complication in the story.
- Include a device that completes two different tasks from the same initiation in the Presentation.
- Create and present two Team Choice Elements that show off the team's interests, skills, areas of strength, and talents.

Team #	Organization Name	Team Name	Level	Team Challenge Time	Instant Challenge Time
120-24240	Wicomico County Public Schools North Salisbury Elementary School	Creative Geniuses	EL	9:00 AM	10:10 AM



WEATHER TOGETHER
early learning

EARLY LEARNING CHALLENGE ROOMS B149 & B152

- Research different kinds of weather.
- Create and present a play about a character learning about a kind of weather for the very first time.
- Include a teacher character and a special weather activity in the story.
- Design and create a weather costume and a weather special effect.
- Create and present one Team Choice Element that shows off the team's interests, skills, areas of strength, and talents.

Team #	Organization Name	Team Name	Team Challenge Time
120-75335	The Salisbury School	Dr. V's Dragons	9:30 AM
120-91918	The Salisbury School	Dr. Ahmad's Dragons	9:50 AM
120-93402	The Salisbury School	Dr. Gill's Dragons	10:10 AM
120-30226	St Michaels Elementary School	Flashlight Lion Ballers	10:45 AM
120-14572	Wicomico County Public Schools Fruitland Primary School	Snow fruits	11:05 AM



Vision

Ignite the power of ALL youth to be the creative and collaborative innovators of tomorrow

Mission

To inspire and equip youth to imagine and innovate through the creative process

New to DI? Welcome!

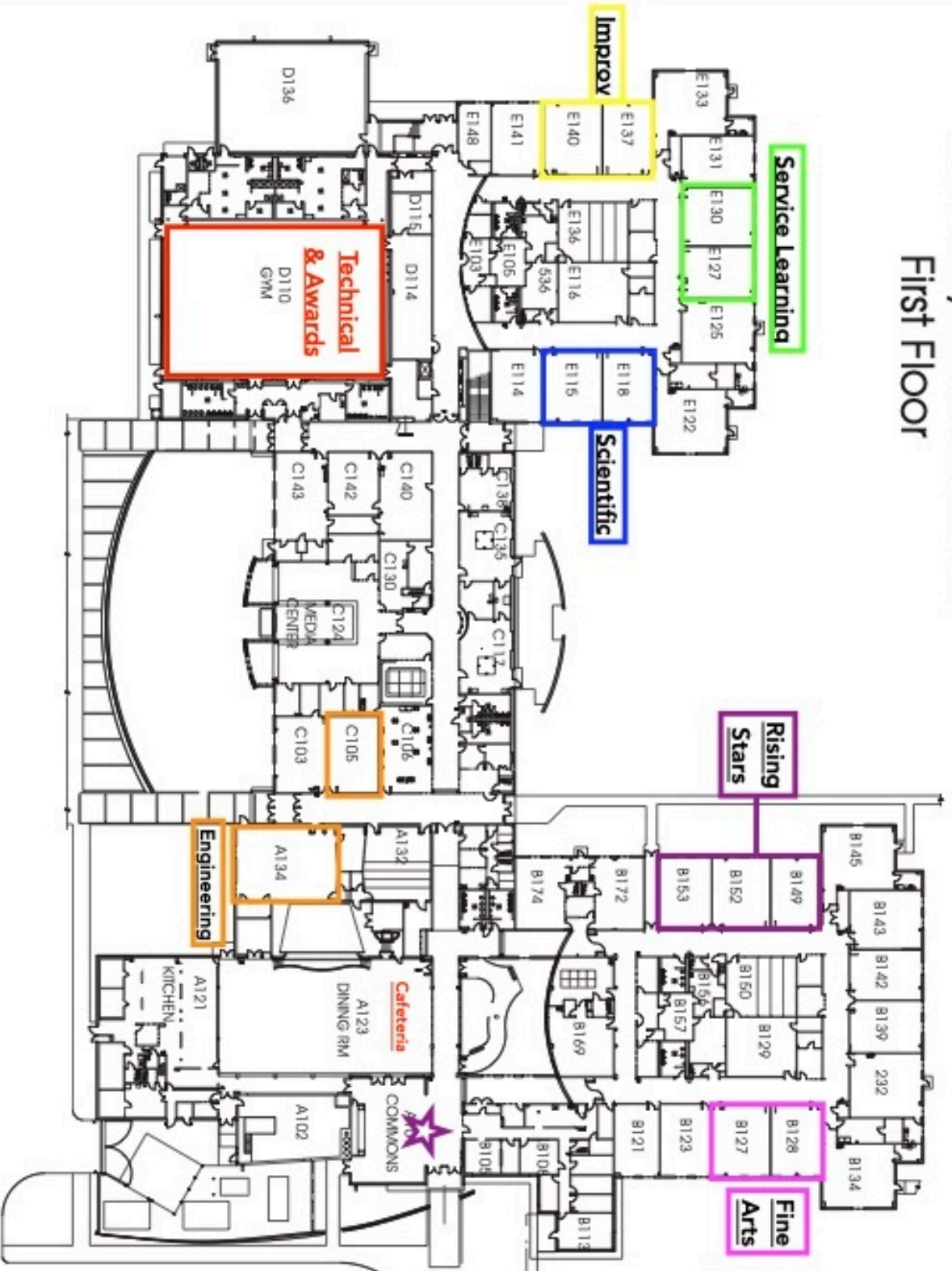
We're glad you're here! There's no better way to understand the Destination Imagination Challenge Experience than to see it in action. To get the most out of your day at this tournament, here's what we suggest:

- Attend at least one Presentation in every Team Challenge. Each Team Challenge is unique and has open-ended requirements, allowing teams to create totally different solutions from one another. Read through the Points of Interest so you know what you can expect to see. Each Presentation is around eight minutes in length.
- Wish the teams luck in their Instant Challenge. All of our teams participate in an Instant Challenge as part of their tournament experience, during which they use quick, creative and critical thinking, and teamwork to come up with a solution in a short amount of time. Spectators are not allowed in these presentations as the Instant Challenges themselves are highly confidential.
- Look at the props, costumes, sets, technical devices and more that the teams have created—but please don't touch! Remember that everything you see was crafted by the team members with no adult Interference.
- Talk to teams, parents and volunteers about their experience with this season of Destination Imagination. Tell them you're considering starting a team, and ask them to share their favorite thing about DI—you'll be amazed by the different answers you hear.
- Have fun, be inspired, and imagine the possibilities!

Learn more at DestinationImagination.org. Sign up for our newsletter for all the latest updates and to be alerted when registration is open for the 2025-26 season.

Learn more at DestinationImagination.org

Salisbury Middle School First Floor



Salisbury Middle School
Floor Plan

WCBOE
Facility Services

FP-1

Date: 3-16-03
Drawn By: BT